

FENDT



Fendt
1000 Vario

Leaders drive Fendt.

Contents

06	Highlights
10	Engine
12	Drive
14	Power lift and hydraulics
18	Additional equipment
22	Cab
26	FendtONE
28	Service
30	Technical specifications



Fendt is a worldwide brand of AGCO.
All details regarding scope of delivery, appearance, performance, dimensions and weights, fuel consumption and running costs of vehicles reflect the latest information available at the time of print. These may change by the time of purchase. Your Fendt dealer will be happy to inform you about any changes. The vehicles shown do not feature country-specific equipment.

550 hp

with Fendt DynamicPerformance

2.35 m

maximum diameter
of the rear tyres

360°

Lighting

430 l/min

max. hydraulic performance



When you know that you're going to make it



Power, traction, versatility – excellent performance in every discipline! This is exactly what distinguishes the Fendt 1000 Vario and makes it unique. In the fourth generation of this series, up to 550 hp of pure power, while at the same time providing remarkable fuel efficiency. Overall, it covers a performance spectrum of 426 to 550 hp with the Fendt DynamicPerformance concept. Thanks to flexible ballast and innovative technologies such as VarioDrive, it is agile and ready for any use. Topped by the new cab, which ensures first-class driving comfort and with the new lighting concept giving 360° of all-round vision at night. The Fendt 1000 Vario is therefore a tractor that can do more – and do it effortlessly. A tractor that can do it all.



Areas of application



Arable



Contractor



Industry,
road & environment

Highlights of the Fendt 1000 Vario

1

Pioneering 360° lighting concept

120,500 lumens on the Fendt 1000 Vario shine light exactly where it is needed. The new UltraVision LED spotlights, installed all around in the cab roof and on the cab, make working at night as easy as during the day. The GroundVision LED spotlights installed in the fenders also illuminate the rear mounting area perfectly.

2

MAN engine & Fendt Adaptive Power

The MAN D26 engine in the Fendt 1000 Vario with 6 cylinders and 12.4 L cubic capacity in combination with the intelligent Fendt DynamicPerformance extra power concept delivers an impressive 405 kW / 550 hp. Thanks to the Fendt iD low-speed concept, the engine operates in the fuel-saving speed range from 650 to 1,700 rpm. With Fendt Adaptive Power, the power level can be reduced when needed to protect implements with less power requirements and save fuel.

3

Intelligent VarioDrive

The Vario drivetrain stands for stepless, dynamic driving at any speed from 0.02 to 60 km/h, an independent, variable four-wheel drive up to 25 km/h and a smallest possible turning circle thanks to the pull-in turn effect. The result: maximum traction, higher efficiency and less wear on the machine.

4

VarioGrip tyre pressure regulation system

VarioGrip means the air pressure of the tyres can be conveniently adjusted for use via the terminal. An optimally adjusted tyre pressure reduces slippage and ground pressure, thus maintaining soil fertility and increasing the towing power by up to 10%*. Thanks to sophisticated technology, the system is suitable for various types of axles and tyres – even for twin tyres.

*South Westphalia University of Applied Sciences; Agricultural Economics Soest

5

Row Crop dual tyres ex works

An absolute novelty: 480 Row Crop dual tyres ex works. The new concept consisting of tyre, stub rear axle, duo wheel hub, intermediate piece, wheel weight and headstock is offered ex works. The vehicle outer width remains below 3.5 m with the aim of enabling easy approval.



6

Powerful hydraulic pumps

Together, two hydraulic oil pumps deliver a maximum volume flow of 430 l/min – ideal for demanding implements. In this way, several functions can be efficiently operated simultaneously with different demands on pressure and volume, for example with a precision seed drill. This reduces throttle losses and saves energy.

7

First-class workstation

In order for the driver to concentrate on the essentials, particular emphasis was placed on an optimised working environment, driving comfort and user-friendliness during the development of the new cab. The premium massage seat, comfortable foot pads on the footrest, the automatic dust extraction of the cab air filter and the 12 l cool box are only part of what makes long working days so much more pleasant.

8

Best overview, even backwards

Thanks to the optional reverse drive control of the Fendt 1000 Vario, the entire driver's cab can be rotated by 180°, supported pneumatically. Best of all, the operating logic adapts automatically – so the driver doesn't have to rethink; the system thinks for him. The rotated driver's cab is particularly useful for special tasks such as forestry operations or municipal work.



Maximum flexibility, higher utilisation

Maximum performance in agriculture

As a standard tractor with up to 550 hp, the Fendt 1000 Vario is ideally suited for heavy-duty work on the field, such as soil cultivation, but also for sowing and logistics – making it flexible to use all year round. With Fendt Adaptive Power, the maximum power can be reduced in stages as required, which, for example, protects PTO-driven implements with less power requirements. VarioDrive offers a variable four-wheel drive, extremely high tractive force and the pull-in turn effect for high manoeuvrability. With the integrated VarioGrip tyre pressure regulation system and the twin tyres with dual wheel hub, traction is increased and ground pressure is reduced at the same time. The simple mounting of the twin tyres on the Duo wheel hub supports a quick changeover for the respective application. Thanks to the new concept of the 480 Row Crop twin tyres, the vehicle exterior width remains with twin tyres under 3.5 m of vehicle exterior width. Two hydraulic pumps provide sufficient delivery volume for each implement and enable optimum supply for all consumers. The new lighting concept ensures a 360° lighting and best view of the work result across the entire working width. Fendt Workgroup (available soon) enables several tractors to work perfectly with each other by visual-

ising and exchanging track lines, field boundaries and coverage maps, i.e., field data in general, in one or more fields. With the new generation of cabs including infotainment package, cool box and the premium driver's seat, first-class comfort is guaranteed for long working days.

Flexible use

The Fendt 1000 Vario is not only impressive in agriculture, it is characterised by particularly great flexibility. The standard tractor design makes it possible to versatilely use up to 550 hp and to maximise the load of the tractor – for example, hauling slurry, heavy soil cultivation, at a construction site or in forestry use. Its flexible ballast concept and high permissible overall weight as well as thrust force with a good overview are also perfect for use on the silo. Thanks to the reverse drive control, the Fendt 1000 Vario is also ideally equipped for use with milling, mulchers or wood chippers. With the right wheel and front weight combination, it can be optimally ballasted. This results in up to 23 tonnes of permissible total weight in the field*.

The self-cleaning air filter and the automatic dust extraction of the cab air filter considerably reduce maintenance requirements and ensure an optimal supply of fresh air to the engine and the cab – ideal for dust-intensive applications such as lime milling, soil stabilisation and baling straw. In addition, there is the new generation of cabs, which, in addition to high comfort, is the ideal workplace for long days, and at the same time perfectly illuminates the working environment with the 360° lighting concept.

*Figure dependent on country-specific legal requirements



When it performs better and consumes less



2,650 Nm
from 1,150 rpm

Engine: MAN D26

Under the hood of the Fendt 1000 Vario is the optimised MAN D26 engine, which shines with uncompromising performance, increased efficiency and sustainability through HVO compatibility. Developed for the hardest work, it is the spirit of the largest standard tractor on the market. The 6-cylinder engine with 12.4 l displacement can deliver up to 550 hp in the most powerful configuration and is perfectly suited for the toughest applications. Thanks to the Fendt iD low-speed concept, the motor also operates in the fuel-saving speed range from 650 to 1,700 rpm. Other key features of the MAN D26:

- VTG turbocharger with engine braking function for additional safety and control
- Hydro tappet for automatic valve play adjustment: maintenance-free operation and smooth engine operation
- Adaptive power: adjustable power levels for the gentle use of implements with low power requirements, enable higher tractor utilisation and fuel consumption

Added performance concept: Fendt DynamicPerformance

The increase in performance, exactly when it is needed – and that for all models: With the Fendt DynamicPerformance (DP) multi-performance concept, the Fendt 1000 Vario has up to 30 hp more power for greater productivity and efficiency. The top model Fendt 1052 Vario delivers a maximum engine power of 550 hp. Unlike classic boost concepts, Fendt DP provides power automatically and without limitation when secondary consumers such as fans, compressed air supply, air conditioning or the hydraulic pump need additional power. Fendt DP delivers these in a targeted and situational manner, thus ensuring consistent work performance and productivity. Even at low speeds in soil cultivation, transport or PTO work when stationary with wood chipper. This enables efficient use of more performance – in a targeted and reliable manner.



Concentric Air System (CAS) with forced-air fan

As with its predecessor, the fourth generation of the Fendt 1000 Vario also has the proven Concentric Air System (CAS) cooling concept installed. The concentric, forced-air fan has an independent, hydrostatic drive and is designed for outdoor temperatures of up to 45 °C. Thanks to its extremely narrow and compact design, it allows a high steering angle and is therefore a decisive factor for its extraordinary manoeuvrability. Each component of the cooler package can control the cooling system individually as required, thus gaining additional efficiency. Compared to other cooling systems, the CAS requires up to 40% less drive power – which makes it particularly efficient and noticeably reduces fuel consumption. The optional reversible fan allows the radiator grille to be cleaned independently and can be controlled manually or automatically via the terminal.

Self-cleaning engine and cab air filter

The automatic self-cleaning of the engine and cab air filter is done permanently and passively by the negative pressure of the engine fan. This is complemented by short, situational blasts of air that actively blow out the engine air filter. This keeps maintenance effort low, operational safety high and at the same time the driver and engine always have a clean and good air supply.



VarioDrive – intelligence and performance combined

VarioDrive has been impressive since the first generation of the Fendt 1000 Vario. The drive-train stands for stepless, dynamic driving at any speed from 0.02 to 60 km/h, an independent, variable four-wheel drive up to 25 km/h and a smallest possible turning circle thanks to the pull-in turn effect. The result: maximum traction, higher efficiency and less wear on the machine. The pull-in turn effect reduces the turning circle by up to 10% compared to the conventional four-wheel drive without a pull-in turn effect. This allows for easier and more precise manoeuvring. In addition, with VarioDrive, power transmission remains torsion-free even when cornering, which ensures maximum protection of the soil and the tractor as well as the best traction. Fendt Torque Distribution provides permanent tractive power by intelligently distributing the torque to the axle with the best grip. This minimises slippage, the tractor has maximum traction and transmits the power optimally.

Optimised power control

The automatic limiting load 2.0 regulates how far the engine speed may drop under load before the transmission shifts. It adjusts the limit load value and thus the engine throttle fully automatically. This control is dependent on the target speed (when the tractor management system (TMS) or cruise control is activated) or the engine load (without TMS or cruise control). Manual adjustment is still an option. With TMS, the tractor is operated at the lowest possible engine speed and an economical driving style is automatically achieved!

4,000 hrs

Service interval

Benefits

- No manual four-wheel drive, driver is relieved of workload
- Easy turning on narrow headlands
- Maximum soil protection: at the headland thanks to a small turning circle, in the field by minimising slippage
- Stress-free four-wheel drive protects the machine as much as possible
- Full tractive power on the front axle at all times, even when avoiding obstacles in the field or in turns
- Maximum tractive power on any surface and in any situation
- No more driving range switching I/II for field and road
- Tyres with longer service life
- Decoupling of the hydraulic engine for the front axle from 25 km/h – reduction of towing losses and fuel consumption, increase in efficiency

Benefits

- Tractor always works at its optimum and is therefore operated most economically
- Productivity is increased through lively reaction behaviour
- Optimised fuel consumption with TMS - engine speed is automatically adjusted as required, with maximum work results
- Automatic engine and transmission control, driver can fully focus on optimising work equipment and work result



Maintenance of the transmission

The Fendt 1000 Vario has separate transmission and hydraulic oil supplies, preventing dirt getting into the transmission and preventing damage. The hydraulic oil change is pending every 2,000 operating hours, while the gear oil change is only required after 4,000 operating hours or every four years.

Benefits

- No dirt ingress into the transmission due to contaminated hydraulic oil
- Reduction in overall oil consumption thanks to longer intervals between transmission oil changes and therefore lower maintenance costs



See the benefits of VarioDrive at a glance.

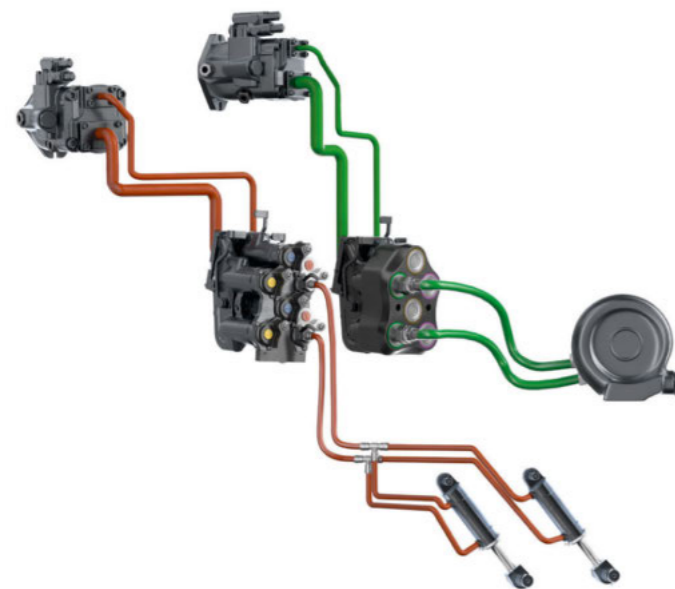


Versatile and reliable hydraulic performance

There are two versions of hydraulic options in the Fendt 1000 Vario: a load-sensing (LS) pump with 220 l/min flow rate or two LS pumps, which together deliver an impressive total delivery rate of 430 l/min. For the second, in addition to the first LS pump, a second one with a flow rate of 210 l/min is installed. For example, several functions with different demands on pressure and volume, such as a precision seed drill, can be operated via two independent circuits. This reduces throttle losses, increases efficiency and saves energy.

Advantages of hydraulic system

- High pump output of up to 430 l/min with maximum efficiency, even when multiple consumers are used in parallel
- High operational safety for implement with greater oil requirements and different consumers (e.g., precision air seeder)
- Low maintenance costs due to long oil change intervals
- Energy saving of up to 2 kW due to low-energy concept for pilot pressure
- Very good steering response, even with parallel consumption
- High extractable oil quantity of 100 l ensures safe supply for bulk consumers
- Use of bio-hydraulic oils supported due to separate oil reservoir
- No oil mixing/dirt ingress
- Outstanding ease of use thanks to FendtONE
- Faster functionality, even in cold weather thanks to preheating package



Working hydraulics

The rear is equipped with at least three valves, with the Fendt 1000 Vario available for up to seven double-acting valves – one in the front, six in the rear. There are three coupling variants to choose from: UDK, DCUP or FFC. The front valve has a maximum flow rate of 120 l/min, the rear valves offer 140 l/min. When equipped with DCUP or FFC couplings, two valves can be equipped with 170 l/min flow rate on request. This makes the Fendt 1000 Vario perfectly suited for use with push-off trailers, tridem tippers or air seeder, as it has sufficient volume flow for hydraulic cylinders and powerful blowers. The coupling is also simplified by the relief lever. The valves are clearly and conveniently set via the 12" terminal, which is operated via the linear modules, the crossgate lever or 3L-Joystick or multi-function joystick.

Power-Beyond and FFC

In order to relieve the hydraulics and further increase efficiency, the system can be extended with Power-Beyond, for a direct, intelligent and demand-oriented oil supply for the implement. With the easy-to-clean Power-Beyond variant with flat-face couplings (FFC), the hydraulic system is additionally protected against dirt ingress and you benefit from even lower power loss.

Full lifting capacity for every application

Front power lift

The front power lift is available in two versions and offers a maximum lifting capacity of 5,688 kg at the coupling point. The electronic hoist regulator with position sensors ensures precise control, while the dedicated hydraulic supply in the front and integrated rockers in the armrest allow easy operation. An integrated vibration damping with nitrogen dampers increases driving comfort. Sophisticated details such as the external operation, a leakage oil container in the lower link frame and a 7-pin implement power socket in the front facilitate use. Optionally, a hydraulic valve and a pressure-free return are available. Protective covers for hydraulic lines, cylinders with bellows guard and folding lower link close to the vehicle round off the overall concept.

Front power lift with position and load relief control

The double-acting front power lift with position and load relief control ensures the best work results. The desired contact or load relief pressure can be set via the terminal. A position sensor detects ground unevenness and reacts immediately. In this way, the device is reliably guided over the ground at a constant height. The control system starts at 0,6 km/h – without any additional relief springs.

Benefits

- Implements precisely follow the ground contour in consistent processing depth for implement-friendly and fuel-saving working
- Optimum operating comfort via adjustment in the FendtONE terminal
- Best traction, manoeuvrability and directional stability, as the front axle is automatically loaded as desired
- Driver does not have to correct manually and can focus on other processes
- Quick tyre change by jacking up the tractor using the pressure of the front hydraulics



Rear power lift

The rear power lift offers an impressive maximum lifting force of 13,180 kg at the coupling point and electronic hoist control (EHR), which enable comfortable raising and lowering via the linear modules on the FendtONE armrest. The tractive power is measured via the gear pressure, while the load-compensated lowering ensures a constant lowering speed even with changing loads. The active vibration dampening ensures noticeably more driving comfort with implements when driving on roads. The system is also impressive in terms of operating comfort: The external operation on the rear fenders on both sides enables quick attachment and detachment and the lifting struts with integrated scale facilitate precise adjustment.

Lower link in parking position

The height setting of the lower link is done quick and tool-free by changing one bolt and pushing the lower link up until it engages. This shortens the lifting struts and brings the lower link into the parking position. This creates 15 cm more clearance between the lower link and the PTO shaft or drawbar and thus always ensures maximum manoeuvrability with maximum safety in the team. This well thought-out solution makes it much easier to adjust and the lower links do not have to be cumbersome removed.

Tough, ground-friendly, flexible

Superior manoeuvrability

The pull-in turn effect, which is made possible by the separate drive of the front axle with the VarioDrive, reduces the turning circle by up to 10% compared to a conventional four-wheel drive. The Fendt 1000 Vario achieves an improved track circle of 14.4 m (with VF710/60R38, with 2,250 mm track at the front axle). This allows for easier and more precise manoeuvring, which is useful, among other things, on narrow headlands and contributes to soil protection.



Dual-circuit four-wheel braking system

Separate brake circuits for the front and rear axles as well as two redundant pneumatic circuits ensure increased safety. Wet brakes with compressed air control and pressure lubrication minimise wear and drag loss. The rear axle is equipped with new multi-plate layer, which offer improved braking force and reduced wear thanks to three layers on each side. The front axle has five layers per side. The interaction between the braking system and VarioDrive drive technology enables sensitive, cleanly adjustable and torsion-free braking, which protects the entire vehicle and increases driving safety – even at high payloads and high speeds.



Dual speed rear PTO with automatic function and stationary operation

With the dual speed rear PTO (1000/1000E), the Fendt 1000 Vario always works at the optimum operating point and can deliver more power or work as fuel-saving as required. The connection between the crankshaft and the PTO stub is made via only one gear stage, which achieves a high efficiency. The flange pin used is automatically recognised by the tractor via the PTO stub detection.

The automatic mode of the rear PTO enables simplified operation. Switching the rear PTO on and off can be assigned to a button on the control lever and occurs automatically at predefined positions of the power lift. In stationary mode, a stored engine speed can be automatically started when the PTO is externally activated. Thus, e.g., when filling the slurry tanker, it is unnecessary to enter the cab.

Fendt Stability Control (FSC)

To ensure a safe journey of up to 60 km/h, the Fendt 1000 Vario is equipped with the Fendt Stability Control assistance system. This not only improves safety, but also comfort. The system automatically reduces side lean at driving speeds above 20 km/h and actively suppresses roll when cornering. This significantly increases driving stability.



More tractive power and soil protection thanks to VarioGrip

The fully integrated tyre pressure regulation system VarioGrip is available for flange and stub axles and allows convenient tyre pressure adjustment via the terminal, even for dual tyres. At 800 l/min at 12.5 bar, the water-cooled two-piston air compressor provides the necessary power for fast pressure changes – without any external equipment or operation. For the front and rear axles, two pressure values can be stored and called up while driving. An optimally adjusted tyre pressure reduces slippage and ground pressure, thus maintaining soil fertility and increasing the towing power by up to 10%*. On the road, driving stability and comfort are increased and tyre wear is significantly minimised. The system also reduces fuel consumption by up to 8%*.

*South Westphalia University of Applied Sciences; Agricultural Economics Soest

Flexible tyres and ballasting

In order for the up to 550 hp of the Fendt 1000 Vario to be converted into maximum towing power, the right ballast and the appropriate tyres are required. Thanks to flexible options for wheel and front weights, the Fendt 1000 Vario comes with an unladen weight of 14 t and a permissible overall weight of up to 23 t*. The 1.3 t wheel weight for the rear wheels is new. With a diameter of up to 2.35 m of the rear tyres and 1.84 m of the front tyres as well as a wide range of tyre options, the Fendt 1000 Vario is optimally prepared for a wide range of applications. The right tyres are an important component that can benefit from low wear, fuel consumption and increased traction while protecting the ground, depending on the application.

*Figure dependent on country-specific legal requirements

Rear stub axle and dual wheel hub

- Maximum traction - more productivity with increased soil protection at the same time
- Simple adjustment of different track gauges with the same rim via spacers and moving the wheel hubs
- Simple use of the VarioGrip tyre pressure regulation system for even more soil protection
- Different track widths with the same rim
- The variants can be driven with conventional rims
- More machine utilisation with the dual wheel hub, thanks to flexible use and higher work output, e.g., due to greater area coverage
- With the dual wheel hub, power is transferred to the dual wheels via the stub axle – the power is therefore introduced there, as it is intended for a rim (on the rim and not on the rim edge)
- 60 km/h is possible with single tyres on the 2.5 m stub axis

Row Crop dual tyres ex works

With the new concept, which is available ex works, the vehicle outer width remains under 3.5 m even with 480 Row Crop twin tyres, with the aim of enabling easy approval. The Row Crop Twin tyre is a narrow tyre with large diameter and offers maximum traction at low air pressure. The narrow tread spacing ensures that many lugs are always in contact with the ground, creating a conveyor belt effect and optimizing traction.

Components of the concept

- Wheels / tyres:
 - Rear wheels: R527 VF480/95R54 Trelleborg as twin tyres, S350 1,524 mm rear track
 - Front wheels: R743 VF710/60R38 Trelleborg as single tyres, S265 2,250 mm forward
- Axle:
 - Stub rear axle 2,500 mm, incl. single wheel hub
 - Dual outside wheel hub
- Rear spacer: 50 mm spacer between dual wheel hub and outside dual wheel
- Wheel weight: 2x 1,300 kg load weight rear wheels
- Three-point headstock:
 - Headstock for trailer coupling and drawbar
 - 3-point Cat.4N SK/Rub Blocks



Benefits

- Less diesel and AdBlue consumption thanks to optimised traction
- Advantages of large and twin tyres are easy and convenient to use:
 - Available ex works
 - Approved for road use in many countries
- No harmful compaction of the soil due to excessive slippage - an important contribution to soil conservation

New cab concept with an absolute highlight

First-class comfort – that's what Fendt stands for and where the Fendt 1000 Vario shines. Farmers and contractors spend a lot of working time in the machines. This makes a comfortable workstation all the more important. Generous interior design, 12 l cool box, heated front window made of laminated safety glass, tinted rear window to protect against strong sunlight and heating, the FendtONE operating concept, premium massage seat and a 360° illumination around the tractor – the new cab design of the Fendt 1000 Vario leaves virtually nothing to be desired and creates a pleasant working environment that is a benefit, especially on long working days.

Comfort features

- Large cool box with 12 l capacity
- Three ergonomically mounted foot pedals for comfortable footrest
- 3-pin device socket in the rear for connecting work spotlights or cameras of implements for easy operation via the FendtONE terminal
- Tech Rails (integrated fastening rails) in the C-pillar for attaching additional spotlights, brackets for pipes for transporting seeds or fertilisers, sensors and much more
- Cab is designed for long periods of use
- Powerful air conditioning with automatic function for excellent cooling – designed for very hot regions
- Fendt Infotainment with Apple CarPlay from June 2026 – retrofittable for all previously produced machines



Bonnet and rear camera

The digital bonnet and rear cameras provide a perfect view of the front implement area and the entire rear area of the Fendt 1000 Vario with high-resolution image quality. On the bonnet, the camera is stylishly integrated in the Dieselross emblem, while the rear camera is placed discreetly under the tractor's vehicle number plate. More overview of all relevant areas facilitates the attachment and detachment of implements and ensures greater safety.

Premium driver's seat

A good seat is crucial for healthy and relaxed work. The premium driver's seat is impressive with maximum comfort and well thought-out technology – a seat you don't want to get up from again. The air-sprung comfort seat with genuine leather cover and multi-stage seat heating and seat ventilation convinces with comprehensive adjustment options, including an electrical adjustment of the backrest, sidewalls and lumbar support, which – once perfectly adjusted – ensure maximum ergonomics thanks to memory function. A special feature for additional relaxation: the integrated massage function. In addition to the premium driver's seat, there are three other comfort seats to choose from.

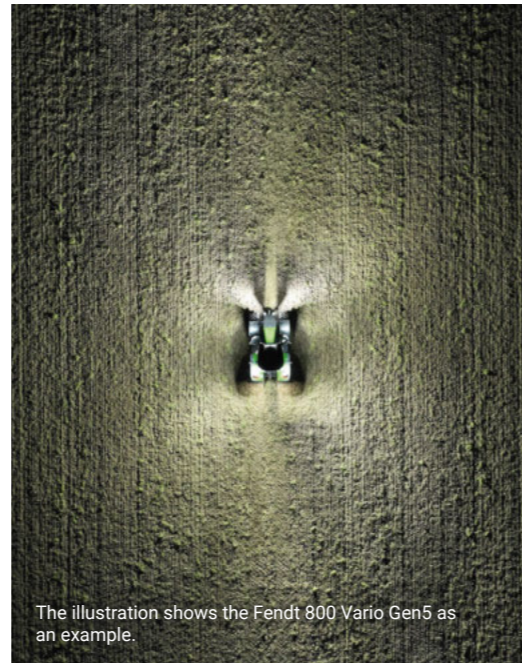
Pioneering 360° lighting

The new lighting concept clearly exceeds previous standards: Choose between 8 or 12 work lights in the cab roof in two LED variants – Vision and UltraVision. The UltraVision version with an impressive 4,400 lumens per spotlight and individual 5-step dimming sets new standards.

The targeted arrangement ensures even illumination of the front, rear and sides – seamlessly across close, middle and long-distance fields. The crossing alignment of the front headlights allows a shadow-free view directly in front of the tractor. Particularly effective: With the UltraVision version, four headlight settings can be stored in four profiles. The lighting can be adjusted according to the situation with just one click and even mirrored.

Overview of central components:

- Four LED work lights up in the bonnet with integrated daytime running lights
- Maximum twelve work lamps in the roof for optimum all-round vision, dimmable in five stages with UltraVision
- Up to six powerful work lights on the A-pillar and the fenders, dimmable in five stages with UltraVision
- Tech Rail integrates in the C-pillar of the cab: two headlights each with adjustable beam angle, dimmable in five stages with UltraVision
- GroundVision: Targeted illumination in the rear implement area
- Integrated all-round lighting: fully integrated in roof design, no need for folding in and out



The illustration shows the Fendt 800 Vario Gen5 as an example.

360°

All-round visibility at night

Benefits

- Maximising working hours through optimal illumination even in the dark, less dependence on times of day
- Work quality is not affected even in the dark
- High luminosity with LED spotlights with highest energy efficiency
- Adjust the lighting with one click, depending on the situation (without interrupting work) thanks to savable settings in four profiles with UltraVision



Mirrors for the best overview

The rear-view mirrors are available in three variants. The simple rear-view mirror has mechanically adjustable mirror holders, an electrically adjustable and heated main mirror as well as a mechanically adjustable and heated wide-angle mirror – each without a outline lamp. The comfort mirror also offers an outline lamp as well as electrical adjustment and heating of all mirrors, while the electrically telescopic comfort mirror also makes the mirror holder electrically adjustable. All variants are integrated into the vehicle electronics and can be operated via the terminal.

Benefits

- No blind spots and the best overview even with large implements in tight spaces
- Maximum safety and comfort, as the driver can adjust the mirrors comfortably and easily in the cab
- Vehicle dimensions easily recognisable by other road users via marker lights



Reverse drive control

Thanks to the optional reverse drive control of the Fendt 1000 Vario, the entire driver's cab can be rotated by 180°, supported pneumatically. Best of all, the operating logic adapts automatically – so the driver doesn't have to rethink; the system thinks for him. The pivoted driver's cab on the tractor is particularly useful for special tasks such as forestry operations or municipal work. Nevertheless, there is no need to avoid comfort in the cab: both available cooling boxes and the comfort passenger seat are also possible with the reverse drive control.

One thing is simple: FendtONE

■ Consistent operating philosophy

FendtONE's first holistic operating approach on the market enables seamless use without having to switch between different media.

■ Freely programmable control panel

The buttons can be freely assigned and customised via the Individual Operation Manager (IOM).

■ Terminal network

The first operating concept on the market with a terminal network and central computing unit ex works enables real-time synchronisation of content on the dashboard and terminal.

■ Unique colour concept

The logical and dynamic colour concept with different function groups and functions provides an optimum overview.



onboard

offboard

FendtONE onboard – the driver's workplace in the cab

With FendtONE onboard, operating the machines is easier than ever before. Various technical functions combined with the high level of comfort of the cab make your day-to-day work in the field easier – for example with different guidance types or the machine control options. Get an overview of the FendtONE driver's workplace spotlights now.

Machine control

The FendtONE machine control system optimally integrates the tractor and implement, which facilitates precise control of part-width sections and pinpoint cultivation of partial areas. This maximises operator comfort, saves operating inputs and reduces the driver's workload thanks to an intuitive operating system.



Guidance system

Track guidance with FendtONE ensures precise machine operation and sustainable soil protection by automatically keeping the machine on the desired track. This reduces the driver's workload, lowers operating costs and saves time, especially on long working days.



When technology and comfort become one.

FendtONE offboard – digital recording, analysis and management of data

Your business generates valuable data for the documentation and optimisation of machines, personnel and operating resources. The seamless recording and visualisation of data is essential for this. FendtONE offboard* simplifies planning and documentation by wirelessly transferring standardised data to the portal. A simple and intuitive introduction to digital documentation and machine operation.

*Please note that FendtONE offboard is not currently available in all countries.

Agronomy

FendtONE enables seamless agronomy through the automatic documentation of field data collected during field work. This data is transferred to a farm management system, which ensures complete documentation and future-proofing while saving time in the office.



Telemetry

Telemetry with FendtONE enables real-time monitoring and analysis of machine data, ensuring optimal fleet management and breakdown prevention. This data not only helps you, but also your service partner with diagnostics and maintenance, allowing better logistics and service decisions to be made.



When farm planning and management become one.



So that your farm keeps running!

You must be able to rely on your agricultural machinery. However, something unforeseen can always happen. To keep your farm running, your Fendt Service Partner is available for you, especially during the harvesting season. This means you don't lose any valuable time in the field or during transport.

+44 330 123 9909



Fendt Care service packages – The best for your agricultural machinery

Benefit from the optimum operational readiness of your Fendt agricultural machine with full cost control even beyond the statutory warranty period. Fendt Care membership offers you customised contracts for maintenance and repair cover. You choose exactly the service package and term that suits you. If you wish, you can secure all repair risks and shorten repair times by allowing your dealer remote access to the machine data via Fendt Connect. Fendt offers you the longest coverage in the tractor market and the most comprehensive agricultural machinery insurance in the industry. The advantages of Fendt Care are obvious: your risk is minimised, the costs are calculable and you have full planning security.

Find your perfect Fendt Care tariff!



AGCO Finance – Your partner for the growth of your business

When deciding whether to rent, finance or lease, we provide you with complete support based on decades of experience. And Fendt Service is also there for you in your day-to-day work: to keep costs calculable, we offer you customised maintenance and service offers that go far beyond the statutory warranty.



Spare parts – Genuine original parts, without compromise

To ensure that your Fendt remains 100% a Fendt, your Fendt Sales partner only installs genuine parts. These have a proven standard of quality and are safety-tested.

This pays off in many ways:

- 12-month warranty on Fendt original parts and their installation
- Operational reliability at the highest level – Top value retention
- Quickly on the spot in an emergency.

During the harvesting season, your Fendt Sales partner is available seven days a week and around the clock. In the event of a machine breakdown, the technician will be at your site within a short time and will repair your machine as quickly as possible.

Please note that the availability of Fendt Service Packages varies from country to country.

Demonstration service – Test it yourself

Would you like to see for yourself how our agricultural machinery performs in the field? This is possible with the Demo service. After a short briefing from your dealer, you can test how the new tractor or harvester performs in everyday use on your own farm. After all, you know best what the new machine needs to be able to do.

Arrange a demonstration immediately!



Technical specifications

		1040 Vario	1044 Vario	1048 Vario	1052 Vario
Engine					
Rated power	kW/hp	294/400	324/440	353/480	383/520
Rated power with DP ECE R 120	kW/hp	313/426	343/466	373/507	405/550
Maximum power	kW/hp	294/400	324/440	353/480	383/520
Maximum power with DP ECE R 120	kW/hp	313/426	343/466	373/507	405/550
Cubic capacity	cm³	12419	12419	12419	12419
Rated speed	rpm	1700	1700	1700	1700
Max. Torque	Nm	2090	2280	2470	2650
Torque rise	%	19.0	18.0	18.0	17.0
Fuel level	litres	740.0	740.0	740.0	740.0
AdBlue tank	litres	79.0	79.0	79.0	79.0
Transmission and PTO					
Transmission type		TA400	TA400	TA400	TA400
Speed range forward	km/h	0,02-60	0,02-60	0,02-60	0,02-60
Speed range reverse	km/h	0,02-33	0,02-33	0,02-33	0,02-33
Top speed	km/h	60	60	60	60
Rear PTO option		1000/1000E	1000/1000E	1000/1000E	1000/1000E
Engine speed at: 40 km/h / 50 km/h / 60 km/h	rpm	950/1200/1450	950/1200/1450	950/1200/1450	950/1200/1450
Power lift and hydraulics					
Variable flow pump	l/min	220	220	220	220
Variable flow pump option 1	l/min	220+210	220+210	220+210	220+210
Max. valves (front/centre/rear) Power+	number	0(1)/0/5(4)	0(1)/0/5(4)	0(1)/0/5(4)	0(1)/0/5(4)
Max. valves (front/centre/rear) Profi / Profi+	number	1/0/6	1/0/6	1/0/6	1/0/6
Max. available hydraulic oil volume	litres	100	100	100	100
Delivery volume control valves (1st front)	l/min	120	120	120	120
Max. Rear power lift lifting capacity (at the coupling point)	kg	13180	13180	13180	13180
Continuous rear power lift capacity according to OECD (610 mm behind the coupling point)	kg	9979	9979	9979	9979
Max. Lifting capacity front power lift (at the coupling point)	kg	5688	5688	5688	5688
Electrical features					
Battery power	Ah/V	180/12	180/12	180/12	180/12
Alternator	V/A	14/320	14/320	14/320	14/320
Tyres					
Front tyres (standard)		VF650/60R38	VF650/65R38	VF650/65R38	VF650/65R38
Standard tyres rear		VF750/70R44	VF750/75R46	VF750/75R46	VF750/75R46
1st option for front tyres		VF710/60R38	VF710/60R38	VF710/60R38	VF710/60R38
1st option for rear tyres		VF900/65R46	VF900/65R46	VF900/65R46	VF900/65R46
2nd option for front tyres		VF710/60R38	VF710/60R38	VF710/60R38	VF710/60R38
2nd option for rear tyres		2 x 2 VF480/95R54	2 x 2 VF480/95R54	2 x 2 VF480/95R54	2 x 2 VF480/95R54

		1040 Vario	1044 Vario	1048 Vario	1052 Vario
Dimensions					
Front track width (standard tyres)	mm	2100	2100	2100	2100
Rear track width (standard tyres)	mm	2000	2000	2000	2000
Overall width with standard tyres	mm	2770	2770	2770	2770
Maximum diameter front tyre	mm	1840	1840	1840	1840
Overall length	mm	6350	6350	6350	6350
Total height of driver's cab with standard tyres without Fendt Guide	mm	3550	3550	3550	3550
Total height of driver's cab with standard tyres with Fendt Guide	mm	3550	3550	3550	3550
Max. ground clearance	mm	575	575	575	575
Wheelbase	mm	3300	3300	3300	3300
Small track circle diameter (with specified tyres and track width at the front)	m	14,4 m (710/60R38, 2250 mm)	14,4 m (710/60R38, 2250 mm)	14,4 m (710/60R38, 2250 mm)	14,4 m (710/60R38, 2250 mm)
Weights					
Unladen weight (base tractor with cab - full tanks, without driver)	kg	14000.0	14000.0	14000.0	14000.0
Max. permissible overall weight	kg	23000.0	23000.0	23000.0	23000.0
Max. permissible overall weight up to 40km/h (2-circuit brake)	kg	21000.0	21000.0	21000.0	21000.0
Max. permissible overall weight up to 50km/h (2-circuit brake)	kg	21000.0	21000.0	21000.0	21000.0
Max. permissible overall weight up to 60km/h	kg	18000.0	18000.0	18000.0	18000.0
Max. Drawbar load ball head coupling (in slide rail)	kg	3000	3000	3000	3000
Max. Drawbar load ball coupling (short) (in bottom hitch)	kg	4000	4000	4000	4000



As of 19.08.2025, the current technical specifications can be found here: fendt.com/1000-vario-data
Please note that country-specific variations may occur.

The Fendt 1000 Vario is available in the Power+, Profi and Profi+ equipment lines.

FENDT



Leaders drive Fendt.



 **AGCO**
Your Agriculture Company

www.fendt.com

AGCO GmbH – Fendt Marketing
87616 Marktobendorf, Germany

EN/2501